

AT37G

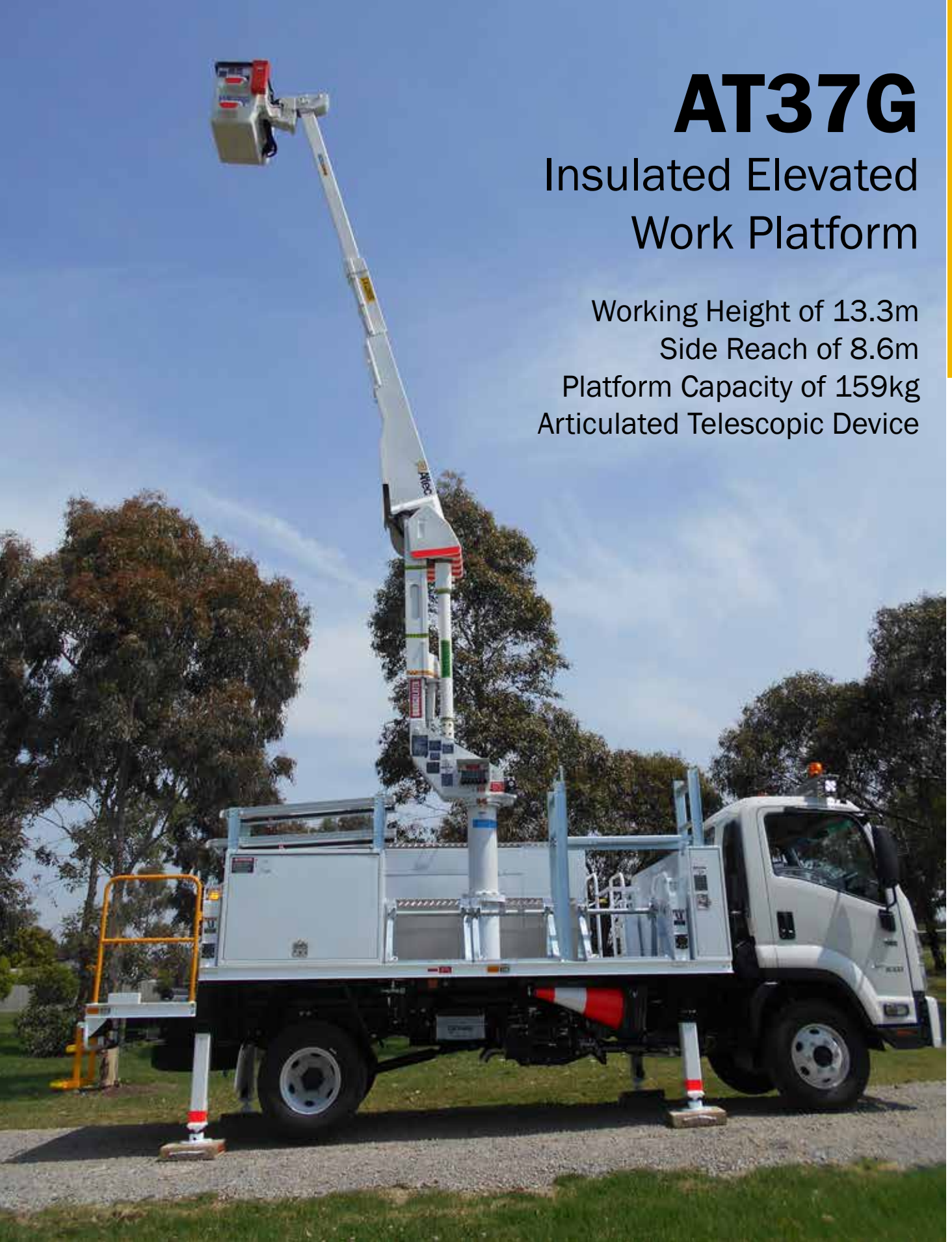
Insulated Elevated Work Platform

Working Height of 13.3m

Side Reach of 8.6m

Platform Capacity of 159kg

Articulated Telescopic Device



1300 1ALTEC
www.altecaus.com.au



SALES | RENTALS | REBUILDS | SERVICE | PARTS

STANDARD FEATURES

- Altec ISO-Grip® system
- Telescopic/Articulated EWP
- Compensating articulating arm
- Hydraulic boom extension
- Insulation per AS1418.10 - 2011, 66kV/33kV dry & 33kV/33kV wet
- Platform, 610mm x 762mm x 1,067mm nominal
- Hydraulic platform levelling
- Platform capacity - 159kg w/rotator
- Fully metered single handle upper control
- Platform access from the ground
- Tool circuit at platform
- Designed in ISO 9001 certified facility
- Outrigger motion alarm (with outrigger option)
- Powder-coated steel structures
- Lifetime structural warranty

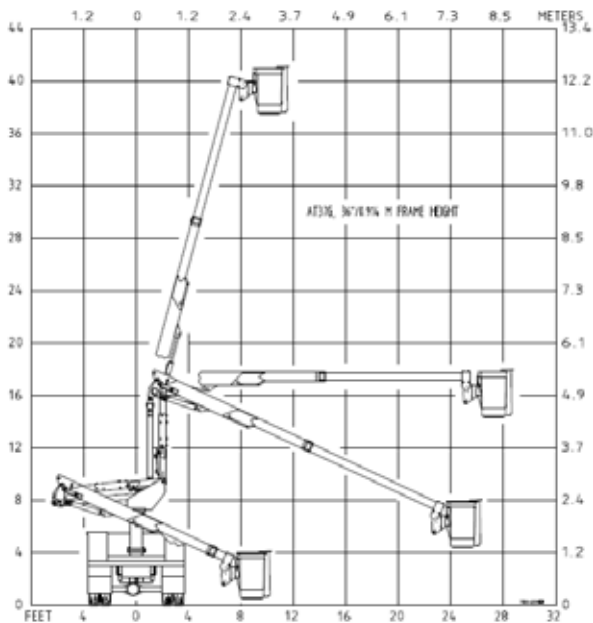
OPTIONS

- Custom layout, lockers and accessories as required
- Chassis spring interlocks for use without outriggers
- Comprehensive range of tools and equipment from Altec Supply®

GENERAL SPECIFICATIONS

Ground to bottom of platform	11.8m
Working height	13.3m
Maximum reach	8.6m
Stowed travel height	3.0m
Boom articulation	
Lower boom	-25° to +75°
Upper boom	-25° to +75°

REACH DIAGRAM



For more complete information on Altec products and services, visit us on www.altecaus.com.au. Material and specifications are subject to change without notice. Featured units in photos may include optional features. Please contact an Altec representative for all available options. Altec® and the Altec logo are registered trademarks of Altec Inc. in the United States and various other countries and may not be used without permission. © 2019. Altec Inc. All Rights Reserved.

